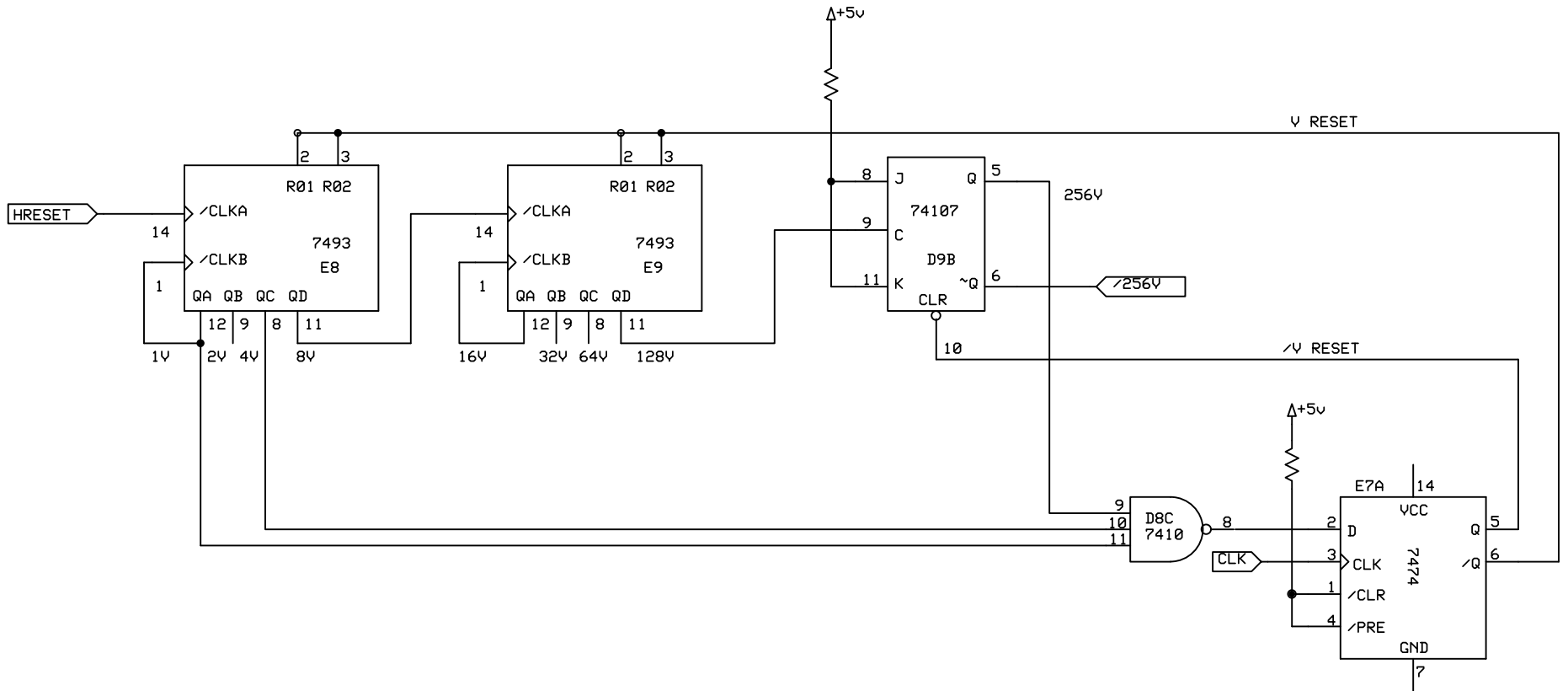
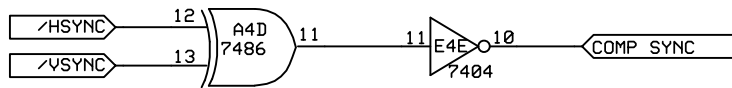
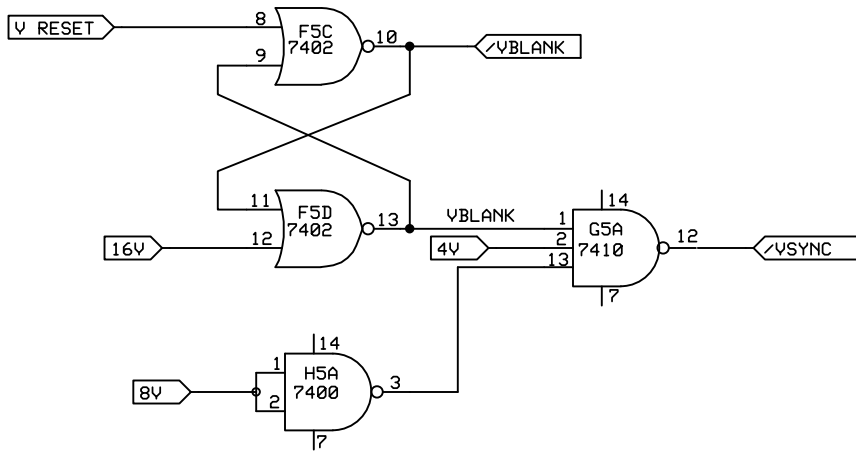
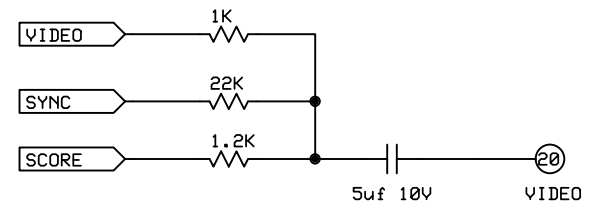
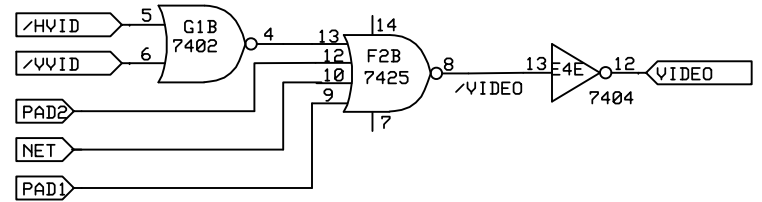
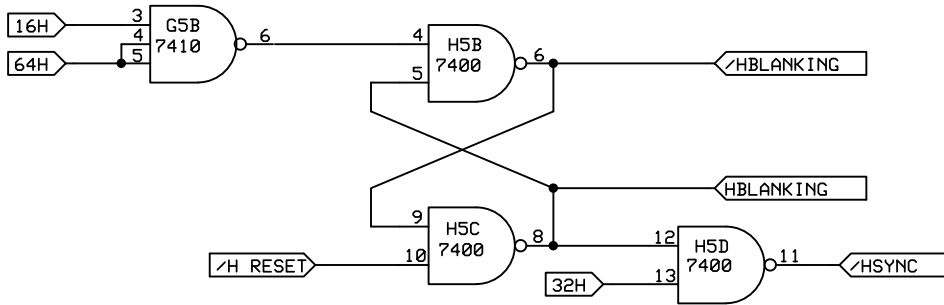


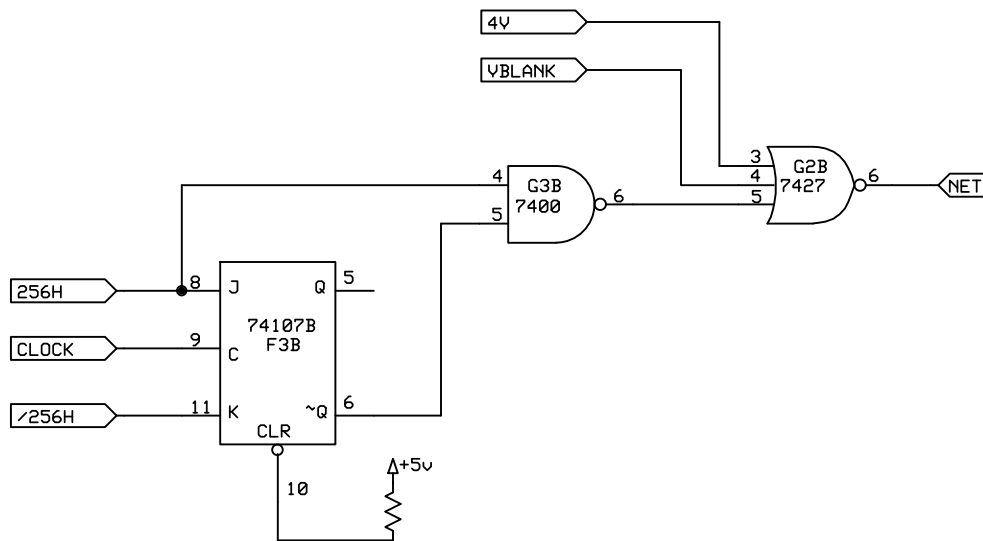
<b>Atari</b>		
<b>Pong</b>		
HSYNC	Rev 1.0	Page 1
	9/23/2006	



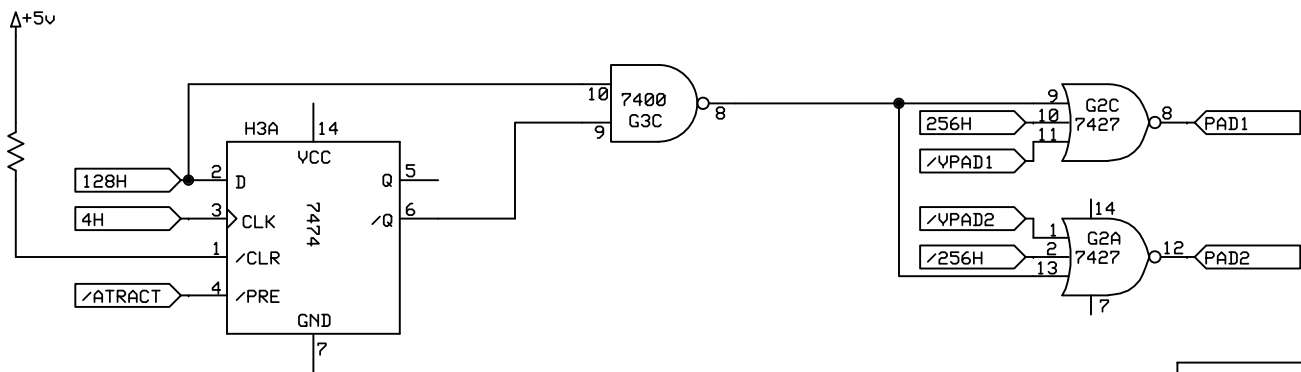
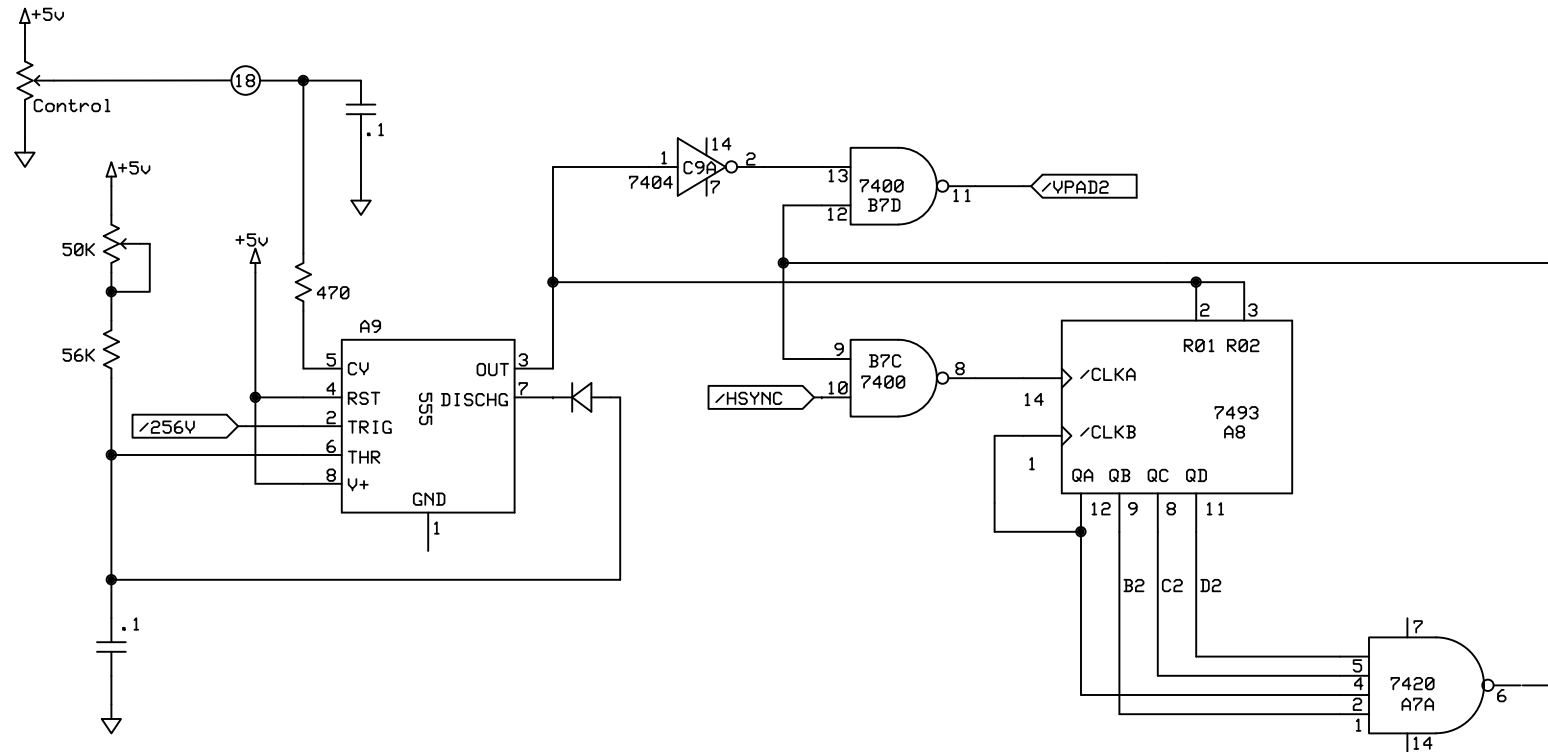
Atari		
Pong		
VSYNC	Rev 1.0	Page 2
	9/23/2006	



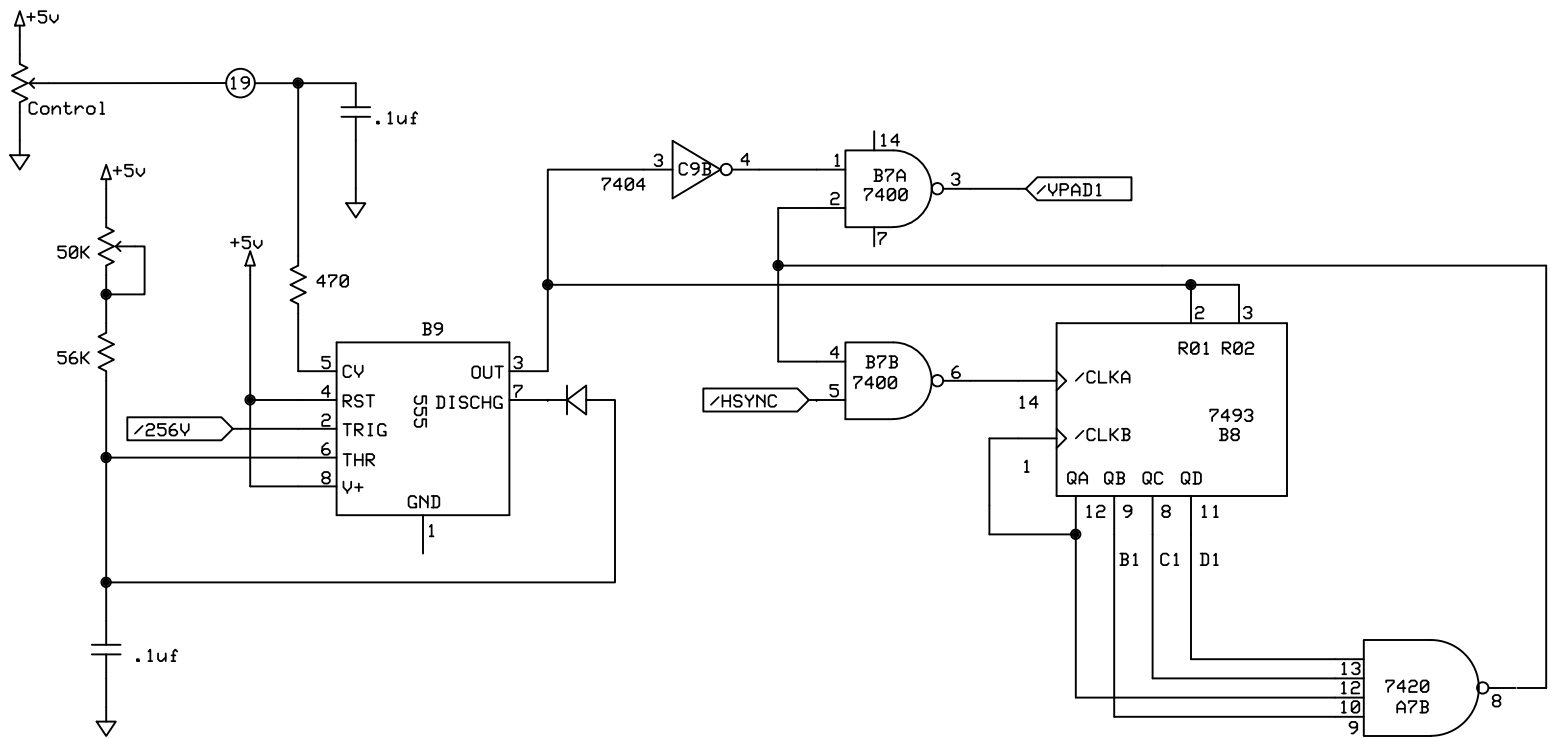
Atari		
Pong		
SYNC/Video Sum	Rev 1.0	Page 3
	9/23/2006	



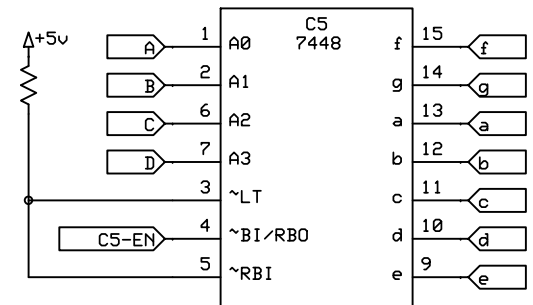
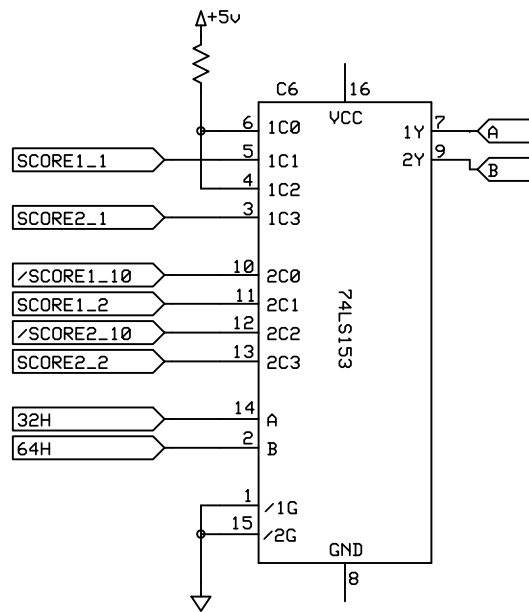
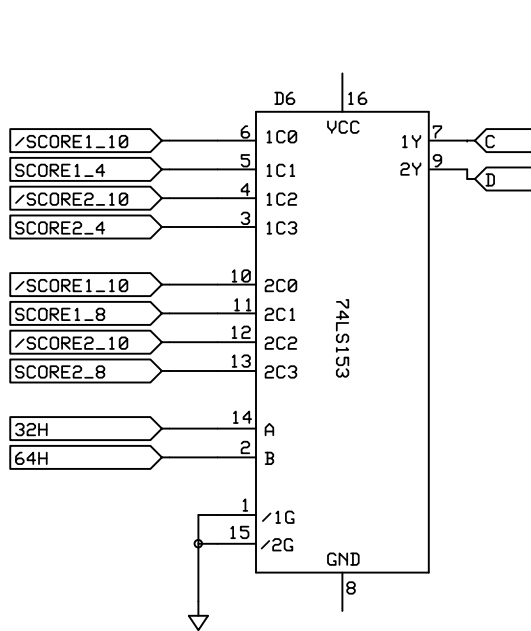
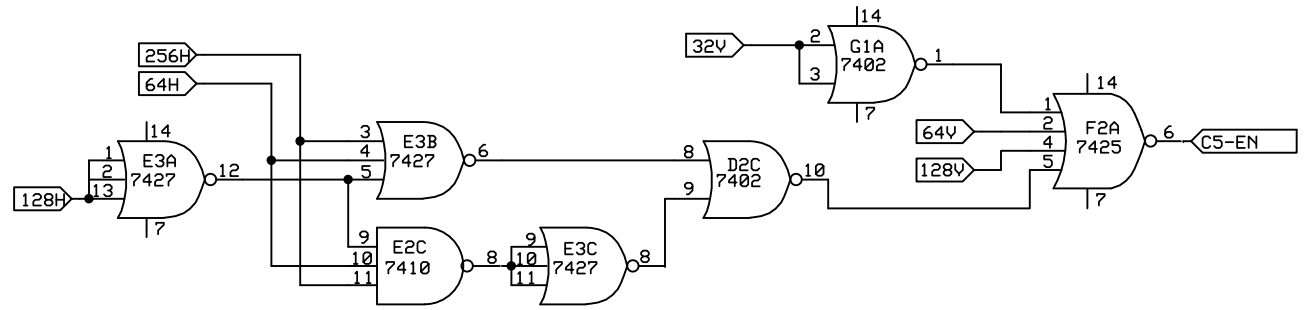
Atari		
Pong		
Net	Rev 1.0	Page 4
	9/23/2006	



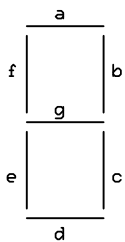
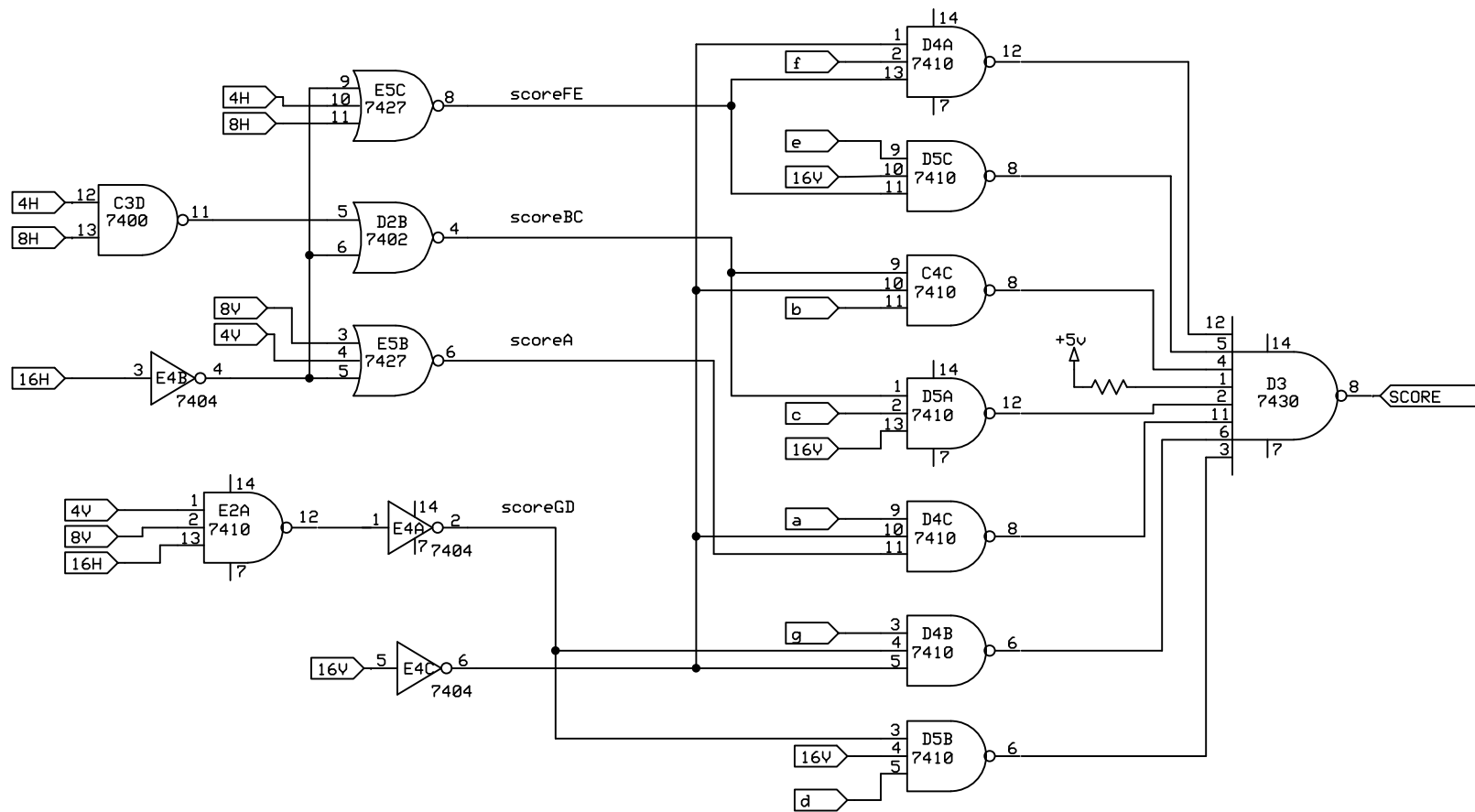
Atari		
Pong		
Paddle 2	Rev 1.0 6/3/2007	Page 5



Atari		
Pong		
Paddle 1	Rev 1.0	Page 6
	6/3/2007	



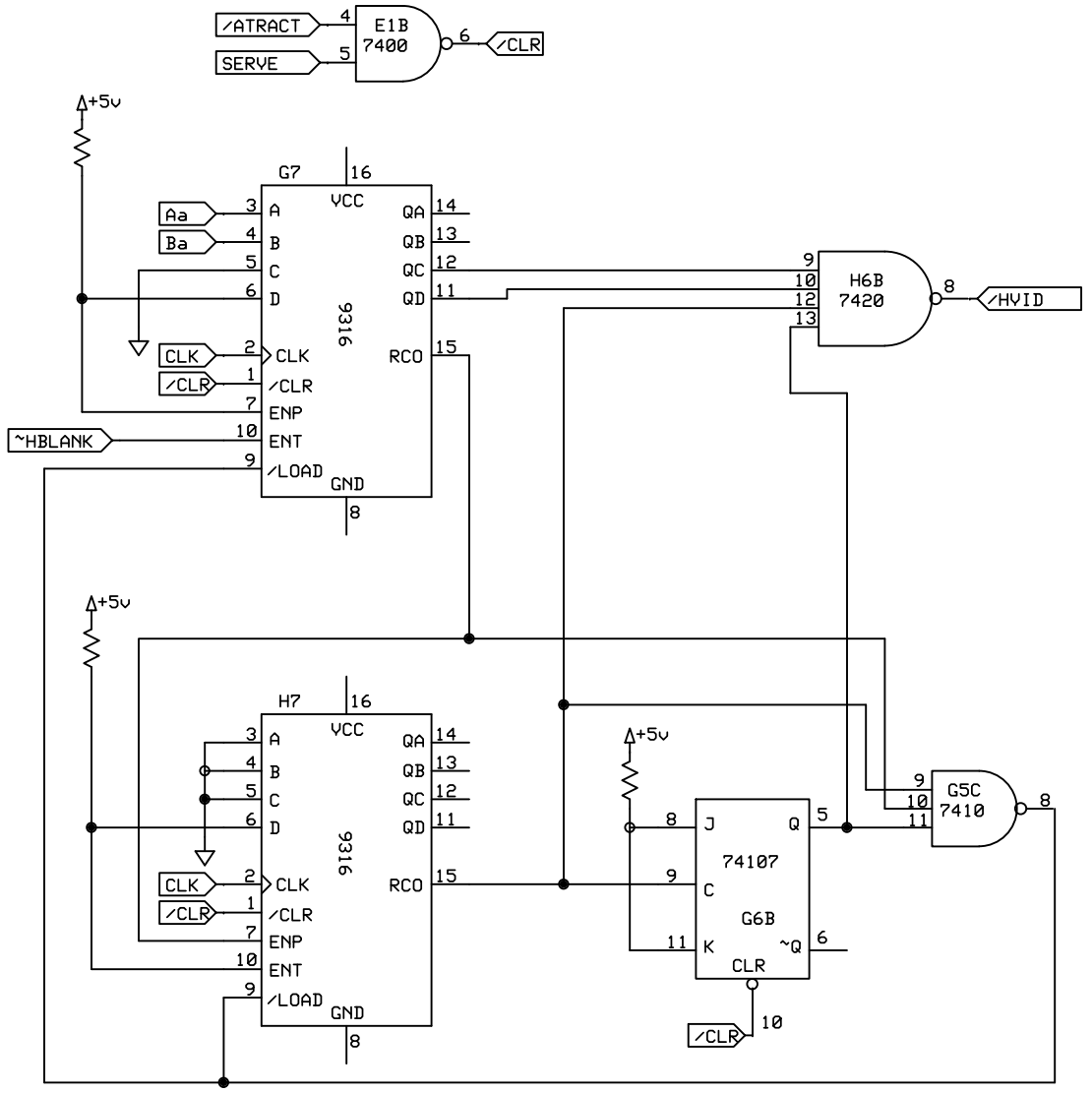
<b>Atari</b>		
<b>Pong</b>		
Score Display 1	Rev 1.0 6/3/2007	Page 7



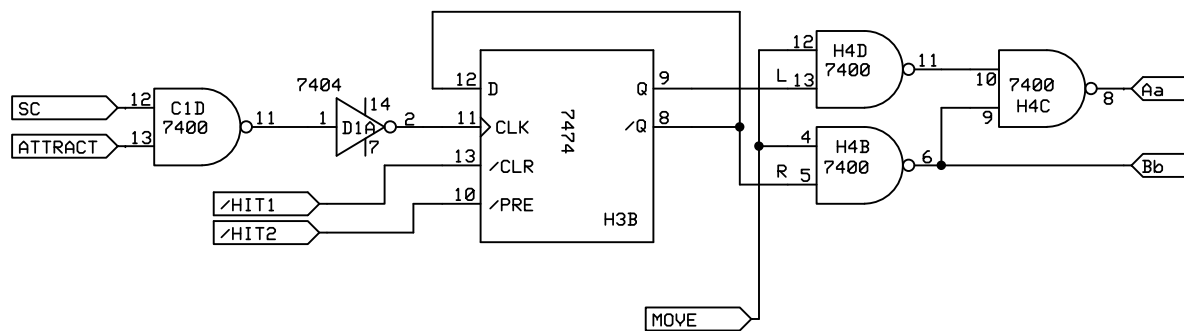
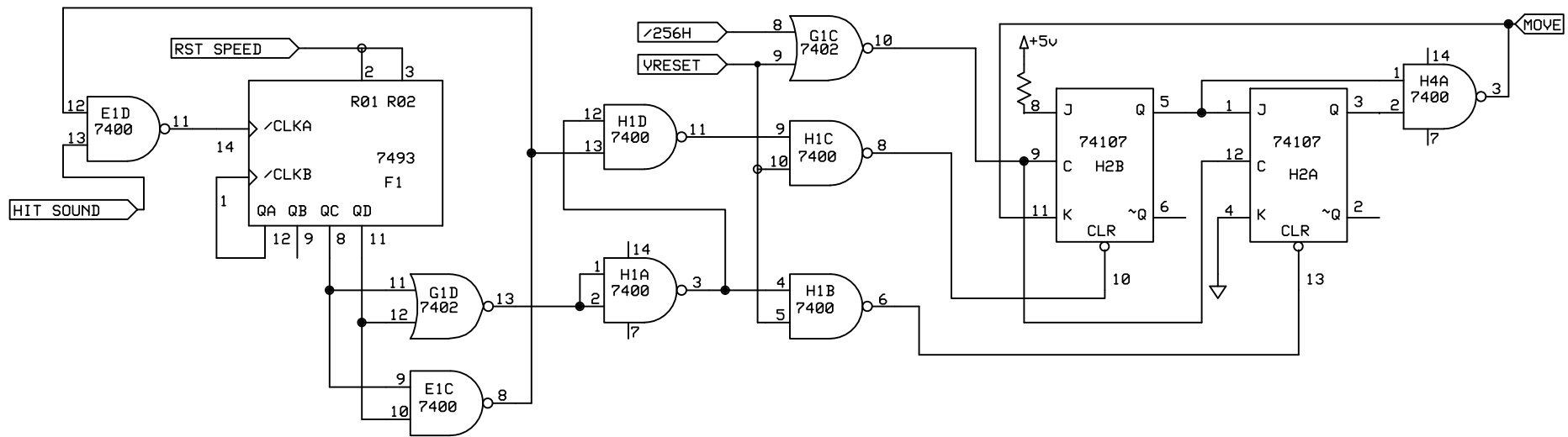
Score Segments

Atari		
Pong		
Score Display 2	Rev 1.0 6/3/2007	Page 8

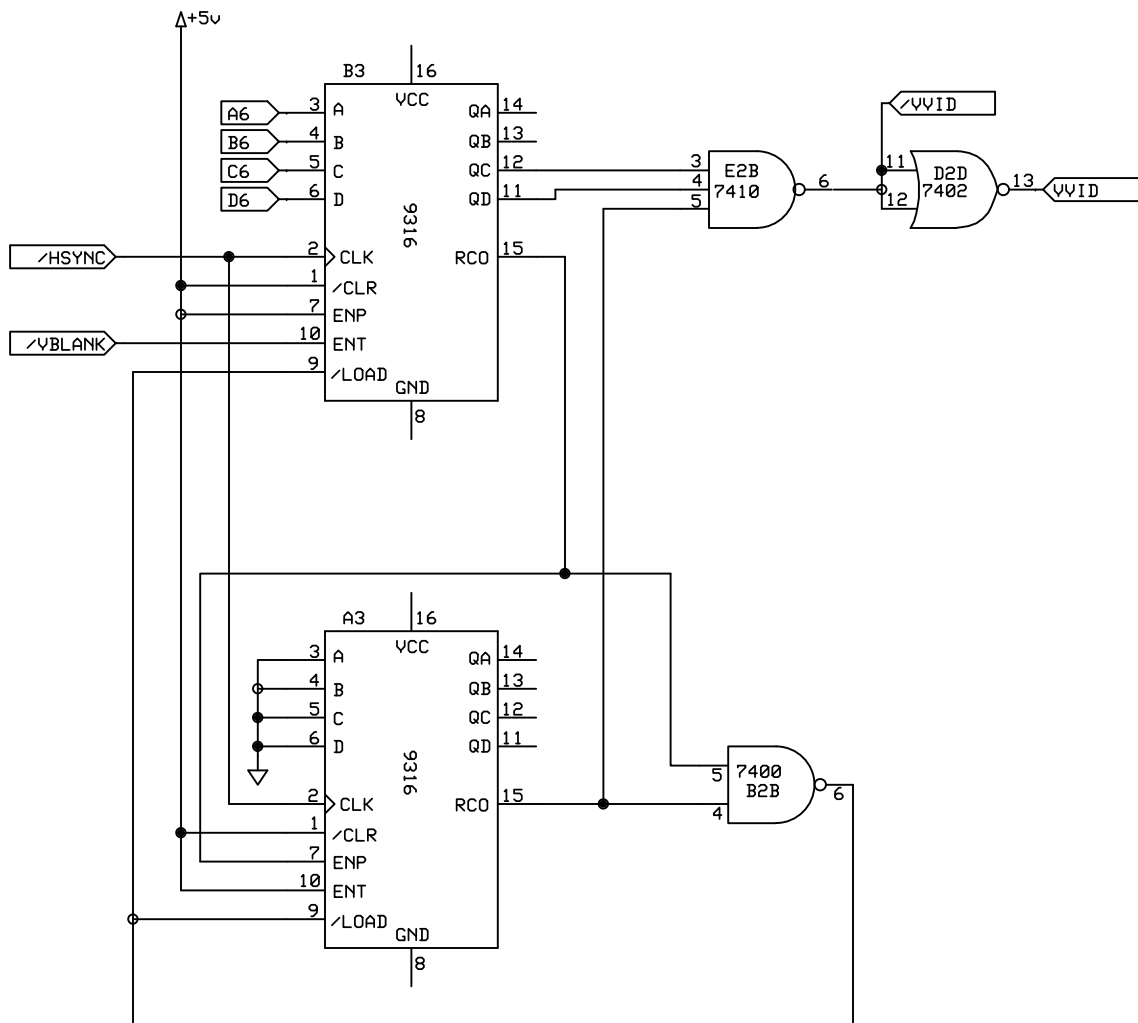


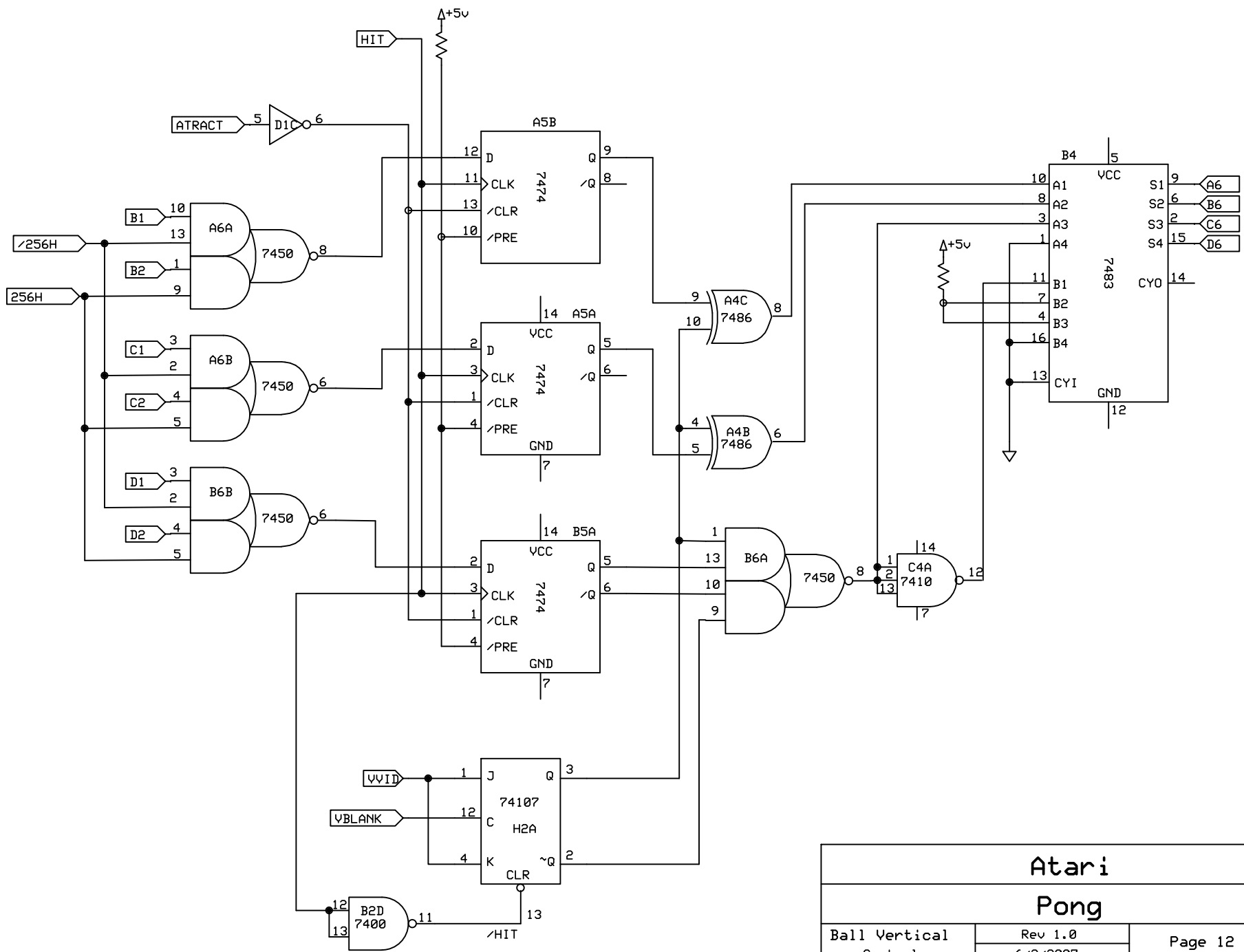


Atari		
Pong		
Horizontal Ball Counter	Rev 1.0 6/3/2007	Page 9

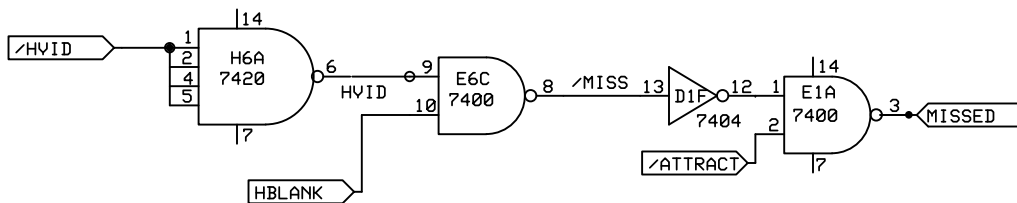
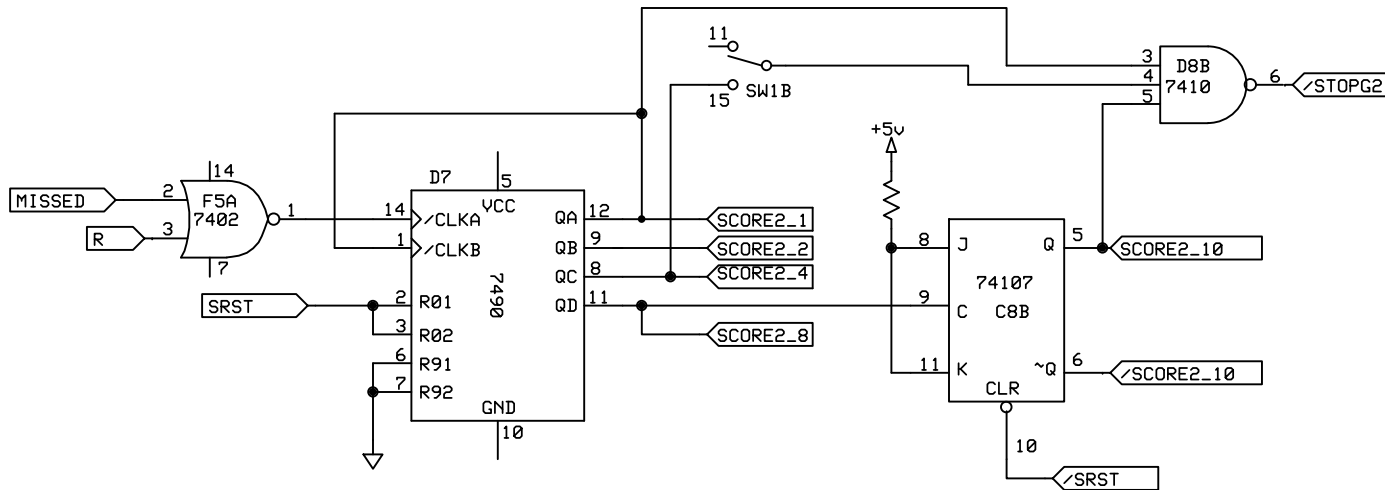
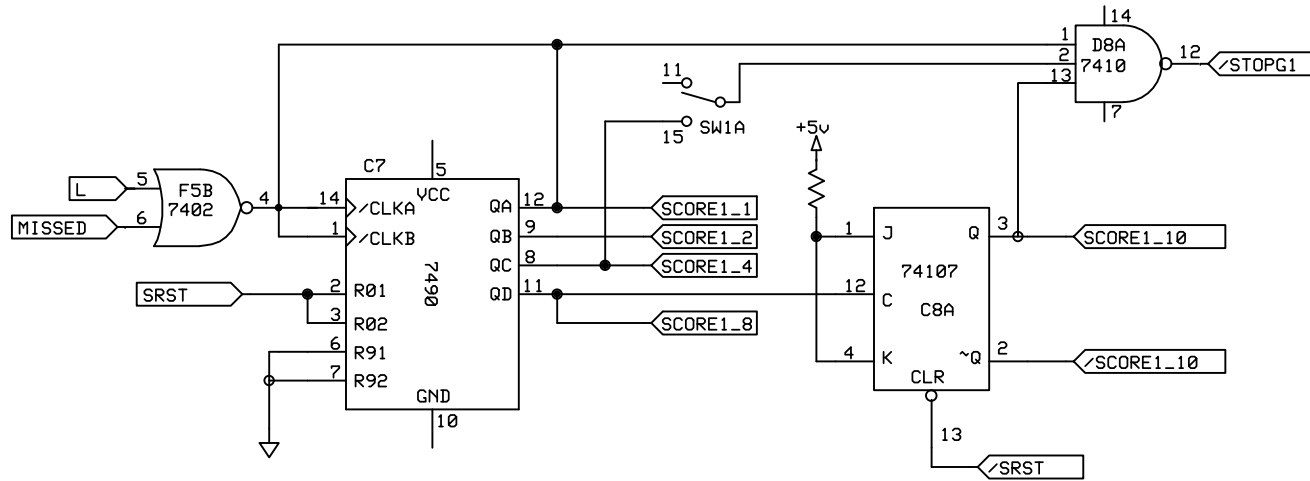


Atari		
Pong		
Horizontal Ball Control	Rev 1.0	Page 10
	6/3/2007	

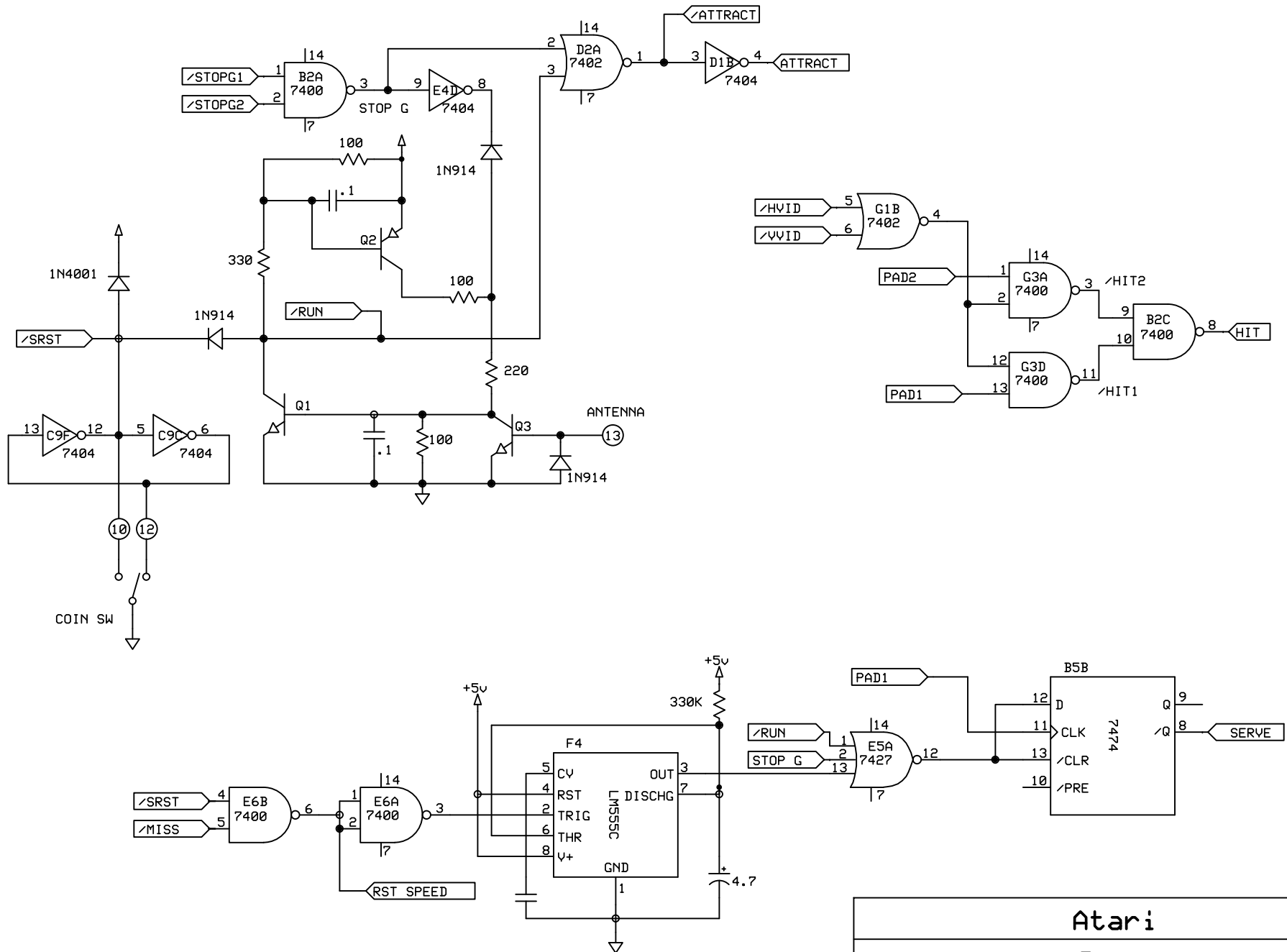




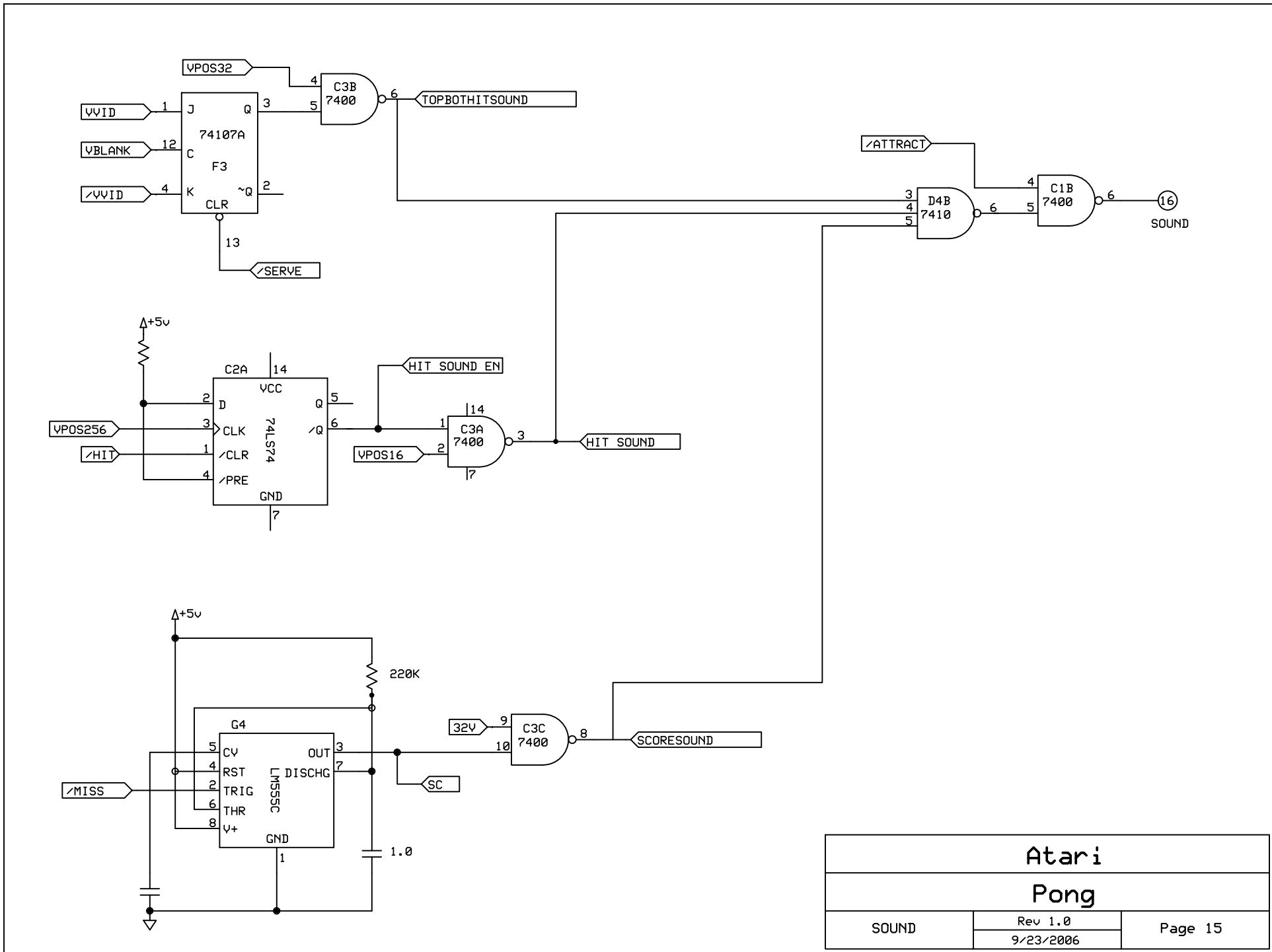
<b>Atari</b>		
<b>Pong</b>		
Ball Vertical Control	Rev 1.0 6/3/2007	Page 12



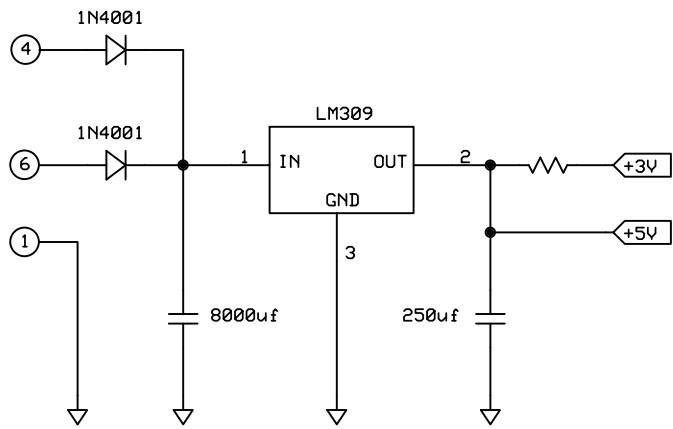
<b>Atari</b>		
<b>Pong</b>		
Score Count	Rev 1.0	Page 13
	6/3/2007	



<b>Atari</b>		
<b>Pong</b>		
Game Control	Rev 1.0	Page 14
	6/3/2007	



<b>Atari</b>		
<b>Pong</b>		
SOUND	Rev 1.0	Page 15
	9/23/2006	



### Notes

- \* These schematics were created based on the original Atari Pong "E" schematics date 4/74.
- \* Where necessary signal names have been added that were not part of the original schematics to make it easier to break the schematic up into pages.
- \* Whenever the alternate version of a logical symbol was used in the original schematics, it has been replaced with the standard symbol.
- \* Off board connections are represented like this: (4)

Atari		
Pong		
POWER	Rev 1.0 9/23/2006	Page 16